



SCHOOL GROUPS FACT SHEET



LITTLE DRIFTER GLEBE

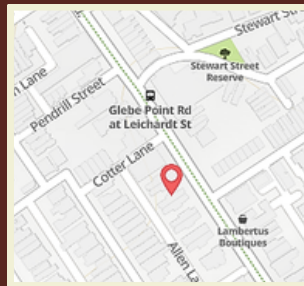
262 Glebe Point Road invites you to experience Glebe's dynamic lifestyle while still only being a quick ferry from the harbour or bus from the city. For globetrotters seeking a unique stay in one of Sydney's favourite suburbs, Little Drifter Glebe is the perfect hostel base. Our hostel is more like a home with plenty of creature comforts and like-minded travellers.

Communal spaces

Within each Drifter is a collection of fun and adaptive communal spaces.

- Rooftop
- Games and Recreation Spaces
- Gym
- TV Room
- Courtyard
- Communal Kitchen
- Communal Laundry

Location



Points of interest

- Shopping centre: 10 min walk
- Ferry: 5 minutes
- Bus: right out the front!
- Powerhouse Museum: 15 min drive
- Supermarket: 5 min walk

Guest experience



Room types

Little Drifter Glebe offers a variety of room types, including shared rooms with 4, 6, or 8 beds, and private double rooms. We have 60 rooms with a total of 220 beds.



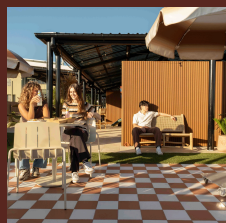
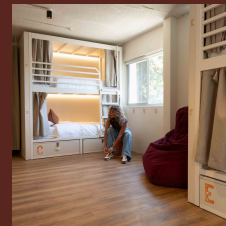
Private Suites

Comfy bedding and linen, storage, desk and chair, casting enabled TV, En-suites where possible, full length mirror, soap dispensers.



Mixed and Female only Dorms

Sturdy bunks, lockable drawers, comfy bedding and linen, Charging and power, Functional ladder, Hooks, Hair dryer and a full length mirror



Group Bookings

We specialise in hosting school groups, ensuring safety, security, and a seamless experience with the help of a dedicated groups coordinator. We offer private hire of various spaces or building sections, as well as secure luggage storage and catering.



Contact

Contact: Planning a school trip? We'd love to hear from you! Shoot your questions or booking requests over to groups@thedrifter.com

Website

thedrifter.com/Glebe

Coach access

Coaches can be parked for a short time directly in front of the venue in dedicated bus stopping area

Guest experience



Key Feature for School Groups

- Purpose built group accommodation venue
- Refurbished in 2025
- Tech driven security, 4-digit pins for students (no more lost keys)
- Master pins and access for teachers
- Dedicated group levels
- Harbour location
- Group activities
- All staff trained in appropriate child safety standards
- Linen included
- Dedicated Group F&B
- Rooftop space
- Easy coach access
- Quiet Sydney location – no hustle and bustle.



Floor plans: Basement Floor



2 262 - 264 GENERAL ARRANGEMENT PLAN - GROUND FLOOR
SCALE 1:100@A1

Glebe - Ground Floor					
Name	Type	Bathroom	Density	Keys	Beds
4 Bed Bunk	Dorm	Shared	4	-	-
6 Bed Bunk	Dorm	Shared	6	-	-
4 Bed Bunk	Dorm	Ensuite	4	-	-
8 Bed Bunk	Dorm	Ensuite	8	1	8
Standard	Private	Shared	1	-	-
			Dorm	8.0	1
			Private	-	-
			Total	8.0	1

GFA Summary
 Ground Floor: 313.32m²
 Level 1: 367.54m²
 Level 2: 378.09m²
 Level 3: 378.09m²
Total GFA: 1437.04m²

Floor plans: Ground floor



1 262 - 264 GENERAL ARRANGEMENT PLAN - LEVEL 1
SCALE 1:100@A1

Glebe - Level 1					
Name	Type	Bathroom	Density	Keys	Beds
4 Bed Bunk	Dorm	Shared	4	15	60
6 Bed Bunk	Dorm	Shared	6	1	6
4 Bed Bunk	Dorm	Ensuite	4	-	-
8 Bed Bunk	Dorm	Ensuite	8	-	-
Standard	Private	Shared	1	-	-
			Dorm	4.1	16
			Private	-	-
			Total	4.1	16



Floor Plans: 1st Floor



2 262 - 264 GENERAL ARRANGEMENT PLAN - LEVEL 2
SCALE 1:100@A1

Glebe - Level 2					
Name	Type	Bathroom	Density	Keys	Beds
4 Bed Bunk	Dorm	Shared	4	16	64
6 Bed Bunk	Dorm	Shared	6	1	6
4 Bed Bunk	Dorm	Ensuite	4	-	-
8 Bed Bunk	Dorm	Ensuite	8	-	-
Standard	Private	Shared	1	2	2
Dorm			4.1	17	70
Private			1.0	2	2
Total			3.8	19	72

GFA Summary
 Ground Floor: 313.32m²
 Level 1: 367.54m²
 Level 2: 378.09m²
 Level 3: 378.09m²
Total GFA: 1437.04m²

Floor plans: 2nd Floor

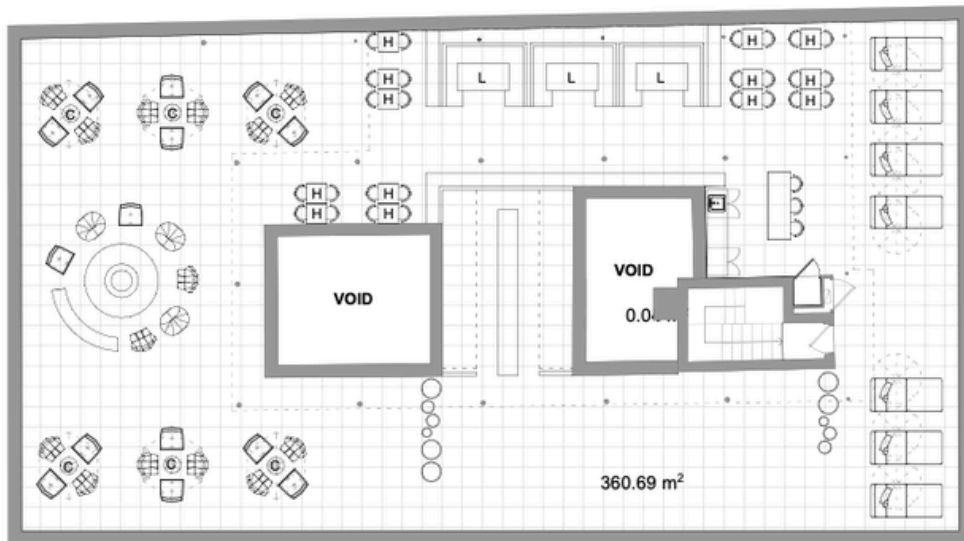


1 262 - 264 GENERAL ARRANGEMENT PLAN - LEVEL 3
SCALE 1:100@A1

Glebe - Level 3					
Name	Type	Bathroom	Density	Keys	Beds
4 Bed Bunk	Dorm	Shared	4	14	56
6 Bed Bunk	Dorm	Shared	6	1	6
4 Bed Bunk	Dorm	Ensuite	4	1	4
8 Bed Bunk	Dorm	Ensuite	8	-	-
Standard	Private	Shared	1	2	2
Dorm			4.1	16	66
Private			1.0	2	2
Total			3.8	18	68



Floor Plans: Rooftop



1 262 - 264 GENERAL ARRANGEMENT PLAN - ROOFTOP
SCALE 1:100@A1



Indicative Rates – School groups:

Room Type	High Season (October- March)	Low Season (April - September)
Dorm Beds (\$PP)	\$65	\$60
Private rooms	\$140	\$110





FAQs

Q: What's the deal with the exclusive group spaces?

A: Think of them as VIP areas! You get your own floor with all rooms, bathrooms and common space between the rooms private to your group only, and you'll need a pin code to get in.

Q: Do you allow more than one school group at a time?

A: Yep, sometimes we host 2-3 school groups at once! When that happens, we'll assign each group their own rooms on the property. But heads up, the gendered bathrooms will be shared between the groups.

Q: What if our school group is on the smaller side?

A: No worries! You will still have your own rooms next or close to each other, for sure on the same level and we can allocate one of our bathrooms on the level only for your groups use. You will only have to share the common areas with other groups.

Q: Is Little Drifter Glebe open to the public? And how do you keep kids safe?

A: Safety is our top priority, full stop. When school groups are in-house, we:

1. Secure their floors: Areas can be isolated and locked down so only the right people get in.
2. Use smart tech: Duve smart locks handle access with pin codes (high-tech and hassle-free).
3. Back it up with training: We run an improved, ongoing safety policy for all staff; always learning, always leveling up.

Q: Are there accessible rooms and lifts?

A: Unfortunately, no accessible rooms or lifts at Little Drifter Glebe.

Q: Do we need to bring sleeping bags?

A: All bed linen is provided, so there is no need to bring a sleeping bag or pillow. Towels can be hired as part of your package or you can bring your own.



FAQs

Q: What are the catering and dining options?

A: We've got your crew covered when it comes to food! Here's the lowdown: Continental brekkie is included in your stay; think cereals, toast, condiments, and juice to kickstart the day. Hot brekkie from \$20pp (because sometimes you need that extra fuel) Lunch packs from \$18pp; perfect for adventures on the go Dinner from \$25pp to wind down with a solid meal. Got dietary needs? No problem! We can accommodate them with a bit of notice. Just give us a heads-up.

Q: Do you offer group experiences and activities for school groups?

A: We absolutely do! We love taking a bit of the pressure off teachers, so we organise fun group activities like game nights, movie nights, musical bingo and more. It's all about creating a great atmosphere where students can unwind and everyone (staff included!) can actually enjoy the evenings without having to plan a thing.

Q: HOW DO WE BOOK?

A: It's really easy, simply email groups@thedrifter.com and we'll be in touch with you on the same day!