

LITTLE



DRIFTER

SURRY HILLS

SCHOOL GROUPS FACT SHEET



## LITTLE DRIFTER SURRY HILLS

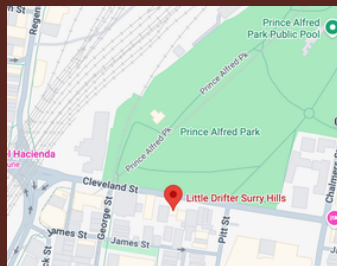
Dive into the vibrant heart of Surry Hills at 203 Cleveland St. Nestled in Sydney's CBD but with its own unique flair, this area has become a haven for unique stores and restaurants. Whether you crave culture, adventure or night life, Little Drifter Surry Hills offers something for all travellers. Just a hop, skip, and a jump from Central Station, our Surry Hills hostel puts Sydney's famous beaches, bustling city centre, and picturesque harbour just a quick journey away. Dive into one of Sydneys most eclectic suburbs!

### Communal spaces

Within each Drifter is a collection of fun and adaptive communal spaces.

- Gym/Wellness
- Games and Recreation Spaces
- TV Room
- Sunny Courtyard
- Communal Kitchen
- Communal Laundry

### Location: 203 Cleveland St



### Points of interest

- Shopping centre: 10 min drive
- Train station: 10 min
- Supermarket: 10 min walk
- Beach: 12 min drive

### Guest experience



DIVERSE ROOM TYPES



ENGAGING HOSTS



VIBRANT COMMUNAL AREAS



GREAT LOCATIONS



CURATED MUSIC, ART AND EVENTS



DIGITISED SERVICES



SIGNATURE EXPERIENCES



SECURITY AND PRIVACY

### Room types

Little Drifter Surry Hills offers a variety of room types, including shared rooms with 4, 6, 8, 10 or 12 beds, and private double rooms. We have 51 rooms with a total of 264 beds.



#### Private Suites

Comfy bedding and linen, storage, desk and chair, casting enabled TV, En-suites where possible, full length mirror, soap dispensers.



#### Mixed and Female only Dorms

Sturdy bunks, lockable drawers, comfy bedding and linen, Charging and power, Functional ladder, Hooks, Hair dryer and a full length mirror



### Group Bookings

We specialise in hosting groups, ensuring safety, security, and a seamless experience with the help of a dedicated groups coordinator. Depending on group size we offer building sections, as well as secure luggage storage and catering.



## Contact

Contact: Planning a school trip? We'd love to hear from you! Shoot your questions or booking requests over to [groups@thedrifter.com](mailto:groups@thedrifter.com)

---

## Website

[thedrifter.com/surry-hills](https://thedrifter.com/surry-hills)

---

## Coach parking

For long-term layovers, use the 24/7 King street wharf bus and coach layover or the Central Station Coach Park off Hay Street. For drop-offs, utilize designated zones on Castlereagh Street or George Street (near First Fleet Park)

---

## Guest experience



## Key Feature for School Groups

- Purpose built group accommodation venue
- Refurbished in 2025
- Tech driven security, 4-digit pins for students (no more lost keys)
- Master pins and access for teachers
- Central location
- Group activities
- All staff trained in appropriate child safety standards
- Linen included
- Dedicated Group F&B

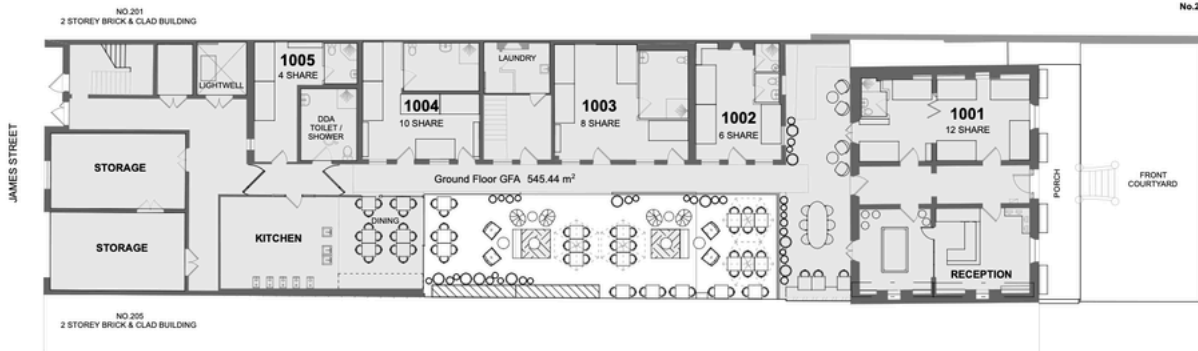


## Floor plans: Building 1 - Ground Floor

Surry Hills - No.203 - Ground Floor						
Name	Type	Bathroom	Density	Keys	Beds	
4 Bed Bunk	Dorm	Shared	4	-	-	-
6 Bed Bunk	Dorm	Shared	6	-	-	-
8 Bed Bunk	Dorm	Shared	8	-	-	-
4 Bed Bunk	Dorm	Ensuite	4	1	1	4
6 Bed Bunk	Dorm	Ensuite	6	1	1	6
8 Bed Bunk	Dorm	Ensuite	8	1	1	8
10 Bed Bunk	Dorm	Ensuite	10	1	1	10
12 Bed Bunk	Dorm	Ensuite	12	1	1	12
Standard	Private	Ensuite	1	-	-	-
<b>Dorm</b>			<b>8.0</b>	<b>5</b>	<b>40</b>	
<b>Private</b>			-	-	-	
<b>Total</b>			<b>8.0</b>	<b>5</b>	<b>40</b>	

No.203 Ground Floor Sleepers: 40

GFA Summary  
 No.203 Ground Floor: 545.44m<sup>2</sup>  
 No.203 Level 1: 193.48m<sup>2</sup>  
 No.203 Level 2: 94.84m<sup>2</sup>  
**No.203 Subtotal GFA: 833.76m<sup>2</sup>**



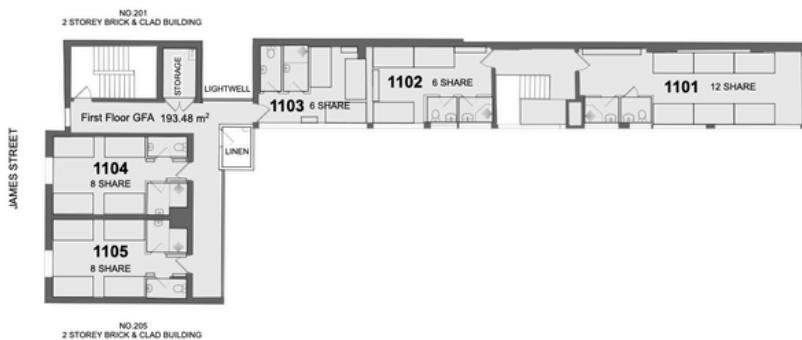
1 No.203 GENERAL ARRANGEMENT PLAN - GROUND FLOOR  
 SCALE 1:100@A1 / 1:200@A3

## Floor plans: Building 1 - 1<sup>st</sup> Floor

Surry Hills - No.203 - Level 1						
Name	Type	Bathroom	Density	Keys	Beds	
4 Bed Bunk	Dorm	Shared	4	-	-	-
6 Bed Bunk	Dorm	Shared	6	-	-	-
8 Bed Bunk	Dorm	Shared	8	-	-	-
4 Bed Bunk	Dorm	Ensuite	4	-	-	-
6 Bed Bunk	Dorm	Ensuite	6	2	2	12
8 Bed Bunk	Dorm	Ensuite	8	2	2	16
10 Bed Bunk	Dorm	Ensuite	10	-	-	-
12 Bed Bunk	Dorm	Ensuite	12	1	1	12
Standard	Private	Ensuite	1	-	-	-
<b>Dorm</b>			<b>8.0</b>	<b>5</b>	<b>40</b>	
<b>Private</b>			-	-	-	
<b>Total</b>			<b>8.0</b>	<b>5</b>	<b>40</b>	

No.203 Level 1 Sleepers: 40

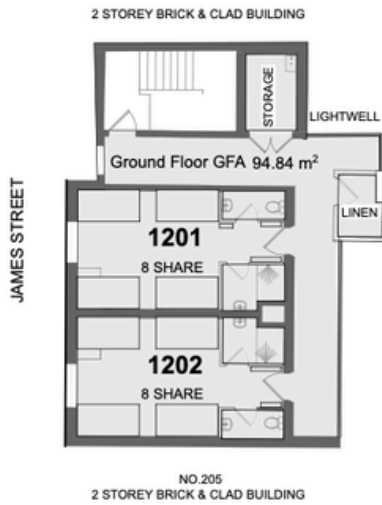
GFA Summary  
 No.203 Ground Floor: 545.44m<sup>2</sup>  
 No.203 Level 1: 193.48m<sup>2</sup>  
 No.203 Level 2: 94.84m<sup>2</sup>  
**No.203 Subtotal GFA: 833.76m<sup>2</sup>**



2 No.203 GENERAL ARRANGEMENT PLAN - LEVEL 1  
 SCALE 1:100@A1 / 1:200@A3



## Floor Plans: Building 1 - 2nd Floor



Surry Hills - No.203 - Level 2					
Name	Type	Bathroom	Density	Keys	Beds
4 Bed Bunk	Dorm	Shared	4	-	-
6 Bed Bunk	Dorm	Shared	6	-	-
8 Bed Bunk	Dorm	Shared	8	-	-
4 Bed Bunk	Dorm	Ensuite	4	-	-
6 Bed Bunk	Dorm	Ensuite	6	-	-
8 Bed Bunk	Dorm	Ensuite	8	2	16
10 Bed Bunk	Dorm	Ensuite	10	-	-
12 Bed Bunk	Dorm	Ensuite	12	-	-
Standard	Private	Ensuite	1	-	-
<b>Dorm</b>			<b>8.0</b>	<b>2</b>	<b>16</b>
<b>Private</b>			-	-	-
<b>Total</b>			<b>8.0</b>	<b>2</b>	<b>16</b>

No.203 Level 2 Sleepers: 16

1 No.203 GENERAL ARRANGEMENT PLAN - LEVEL 2  
SCALE 1:100@A1 / 1:200@A3



## Floor Plans: Building 2 – Ground Floor

Surry Hills - No.207 - Ground Floor						
Name	Type	Bathroom	Density	Keys	Keys	Beds
4 Bed Bunk	Dorm	Shared	4	1	4	4
6 Bed Bunk	Dorm	Shared	6	-	-	-
8 Bed Bunk	Dorm	Shared	8	-	-	-
4 Bed Bunk	Dorm	Ensuite	4	6	24	4
6 Bed Bunk	Dorm	Ensuite	6	4	24	6
8 Bed Bunk	Dorm	Ensuite	8	-	-	-
10 Bed Bunk	Dorm	Ensuite	10	-	-	-
12 Bed Bunk	Dorm	Ensuite	12	1	12	12
Standard	Private	Ensuite	1	2	2	-
<b>Dorm</b>			<b>5.3</b>	<b>12</b>	<b>64</b>	
<b>Private</b>			<b>1.0</b>	<b>2</b>	<b>2</b>	
<b>Total</b>			<b>6.7</b>	<b>14</b>	<b>66</b>	

No.207 Ground Floor Sleepers: 68

GFA Summary  
 No.207 Ground Floor: 508.38m<sup>2</sup>  
 No.207 Level 1: 355.1m<sup>2</sup>  
 No.207 Level 2: 159.35m<sup>2</sup>  
 No.207 Subtotal GFA: 1022.83m<sup>2</sup>



## Floor Plans: Building 2 – 1<sup>st</sup> Floor

Surry Hills - No.207 - Level 1						
Name	Type	Bathroom	Density	Keys	Keys	Beds
4 Bed Bunk	Dorm	Shared	4	8	32	4
6 Bed Bunk	Dorm	Shared	6	2	12	6
8 Bed Bunk	Dorm	Shared	8	1	8	8
4 Bed Bunk	Dorm	Ensuite	4	4	16	4
6 Bed Bunk	Dorm	Ensuite	6	2	12	6
8 Bed Bunk	Dorm	Ensuite	8	-	-	-
10 Bed Bunk	Dorm	Ensuite	10	-	-	-
12 Bed Bunk	Dorm	Ensuite	12	-	-	-
Standard	Private	Ensuite	1	-	-	-
<b>Dorm</b>			<b>4.7</b>	<b>17</b>	<b>80</b>	
<b>Private</b>			<b>-</b>	<b>-</b>	<b>-</b>	
<b>Total</b>			<b>4.7</b>	<b>17</b>	<b>80</b>	

No.207 Level 1 Sleepers: 80

GFA Summary

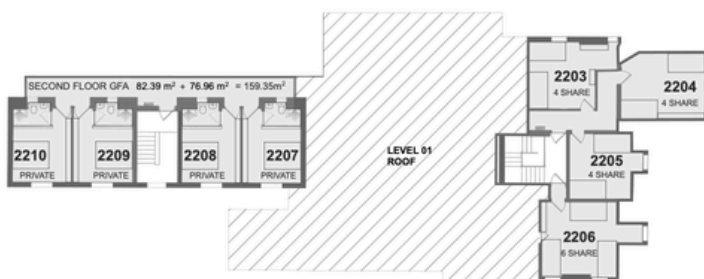
No.207 Ground Floor: 508.38m<sup>2</sup>  
 No.207 Level 1: 355.1m<sup>2</sup>  
 No.207 Level 2: 159.35m<sup>2</sup>  
 No.207 Subtotal GFA: 1022.83m<sup>2</sup>



## Floor Plans: Building 2 – 2<sup>nd</sup> Floor

Surry Hills - No.207 - Level 2						
Name	Type	Bathroom	Density	Keys	Keys	Beds
4 Bed Bunk	Dorm	Shared	4	3	12	4
6 Bed Bunk	Dorm	Shared	6	1	6	6
8 Bed Bunk	Dorm	Shared	8	-	-	-
4 Bed Bunk	Dorm	Ensuite	4	-	-	-
6 Bed Bunk	Dorm	Ensuite	6	-	-	-
8 Bed Bunk	Dorm	Ensuite	8	-	-	-
10 Bed Bunk	Dorm	Ensuite	10	-	-	-
12 Bed Bunk	Dorm	Ensuite	12	-	-	-
Standard	Private	Ensuite	1	4	4	-
<b>Dorm</b>			<b>4.5</b>	<b>4</b>	<b>18</b>	
<b>Private</b>			<b>1.0</b>	<b>4</b>	<b>4</b>	
<b>Total</b>			<b>2.8</b>	<b>8</b>	<b>22</b>	

No.207 Level 2 Sleepers: 26





## Indicative Rates – School groups:

<b><i>Room Type</i></b>	<b><i>High Season ( October- March)</i></b>	<b><i>Low Season (April - September)</i></b>
<b><i>Dorm Beds (\$PP)</i></b>	<b><i>\$80</i></b>	<b><i>\$65</i></b>
<b><i>Private rooms</i></b>	<b><i>\$200</i></b>	<b><i>\$140</i></b>





## FAQs

**Q: What's the deal with the exclusive group spaces?**

A: Think of them as VIP areas! If your group is large enough, you can get one of our buildings for your groups use only!

**Q: Do you allow more than one school group at a time?**

A: Yep, sometimes we host 2-3 school groups at once! When that happens, we'll assign each group their own rooms on the property. But heads up, the gendered bathrooms will be shared between the groups.

**Q: What if our school group is on the smaller side?**

A: No worries! You will still have your own ensuite rooms next or close to each other! You will only have to share the common areas with other groups.

**Q: Is Little Drifter Surry Hills open to the public? And how do you keep kids safe?**

A: Safety is our top priority, full stop. When school groups are in-house, we:

1. Use smart tech: Duve smart locks handle access with pin codes (high-tech and hassle-free).
2. Back it up with training: We run an improved, ongoing safety policy for all staff; always learning, always leveling up.

**Q: Are there accessible rooms?**

A: Definitely! We've got accessible rooms available on request with their own accessible bathroom. Just let us know what you need, we've got you covered.

**Q: Do we need to bring sleeping bags?**

A: All bed linen is provided, so there is no need to bring a sleeping bag or pillow. Towels can be hired as part of your package or you can bring your own.



## FAQs

### **Q: What are the catering and dining options?**

A: We've got your crew covered when it comes to food! Here's the lowdown: Continental brekkie is included in your stay; think cereals, toast, condiments, and juice to kickstart the day. Hot brekkie from \$20pp (because sometimes you need that extra fuel) Lunch packs from \$18pp; perfect for adventures on the go Dinner from \$25pp to wind down with a solid meal. Got dietary needs? No problem! We can accommodate them with a bit of notice. Just give us a heads-up.

### **Q: Do you offer group experiences and activities for school groups?**

A: We absolutely do! We love taking a bit of the pressure off teachers, so we organise fun group activities like game nights, movie nights, musical bingo and more. It's all about creating a great atmosphere where students can unwind and everyone (staff included!) can actually enjoy the evenings without having to plan a thing.

### **Q: HOW DO WE BOOK?**

A: It's really easy, simply email [groups@thedrifter.com](mailto:groups@thedrifter.com) and we'll be in touch with you on the same day!